

M.S.P Mandal,  
Shivchhatrapati college,  
INTERNAL QUALITY ASSURANCE CELL  
Academic Year 2022-23

### 2.7.1 Student satisfaction survey

#### • The Context

The Internal Quality Assurance Cell, Shivchhatrapati College conducted a survey on the student's feedback on the overall Teaching-Learning Process during the academic year 2022-23. A questionnaire comprising of twenty multiple choice questions was circulated among the students and 238 responses were recorded. The recorded responses were analyzed and necessary actions were taken.

#### Observations

- 1) Approximately 60.50% of the respondents agree with more than 85% to 100% of the syllabus covered by the faculty and around 28.99% of the respondents agree with the syllabus covered more than 70 to 84%. Thus, teachers covered almost all the syllabus.
- 2) Around 61.34% of the respondents rated the teacher's preparation prior to classes as excellent or good.
- 3) The teacher's approach was excellent rate by students
- 4) The 58.82% student gave opinion towards college adopted excellent Fairness of the internal evaluation process and 24.27 students rated very good.
- 5) Approximately 63% of the respondents were satisfied with the discussion of their performance in the internal and university examinations.
- 6) 54.85% given responded towards to every time college interest in promoting internship, student exchange, field visit opportunities for students.
- 7) 46.84% of student was given opinion towards usually take and 34.60% student was given responses to every time teacher taking mentoring
- 8) 43.04% students were given opinion usually college give opportunities to learn and grow.
- 9) 54.85% students have been given opinion that teachers every time inform cos and pos
- 10) 59.07% students were given their opinion towards every time mentor follow assign task.
- 11) 58.23% student were given response teacher every time use examples and application to understanding the concepts.
- 12) 53.16% student were fully agree that teachers identify student strengths and encourage and providing right level of challenge

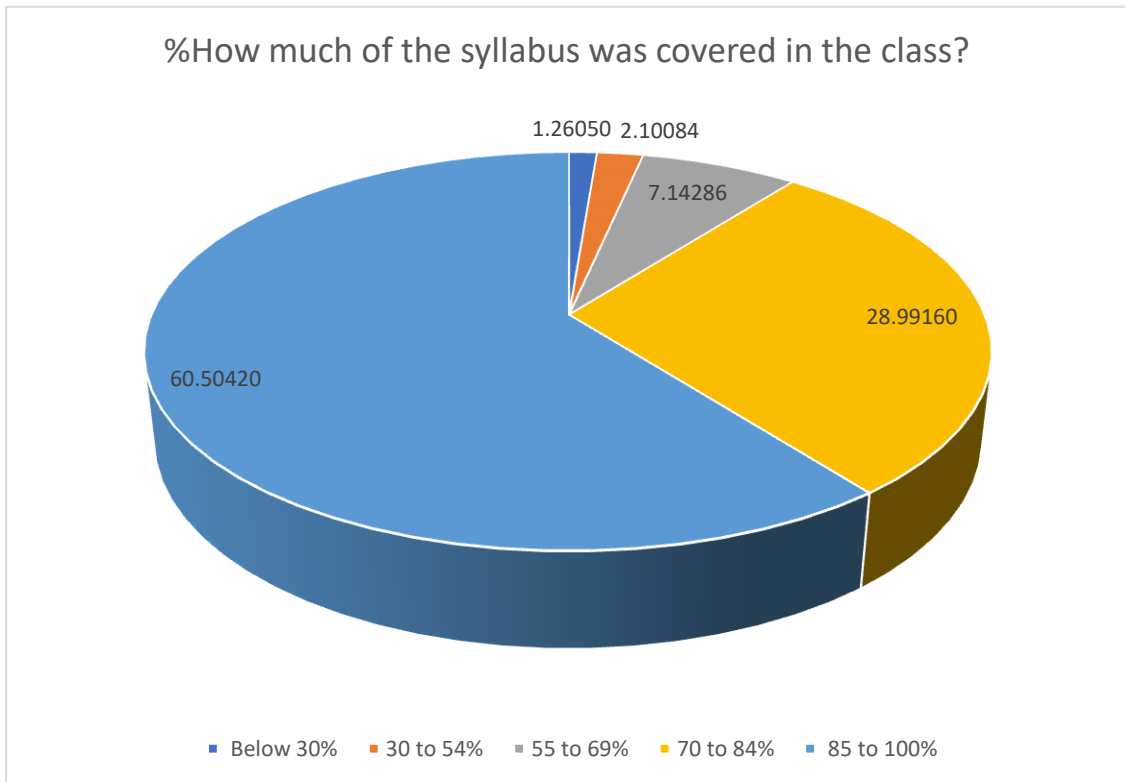


  
Principal  
Shivchhatrapati College,  
Aurangabad

- 13) 53.59% students were given responses that every time teachers help identify the weakness and overcome it.
- 14) 42.62 were rated towards every time college has taken continuous quality improvement.

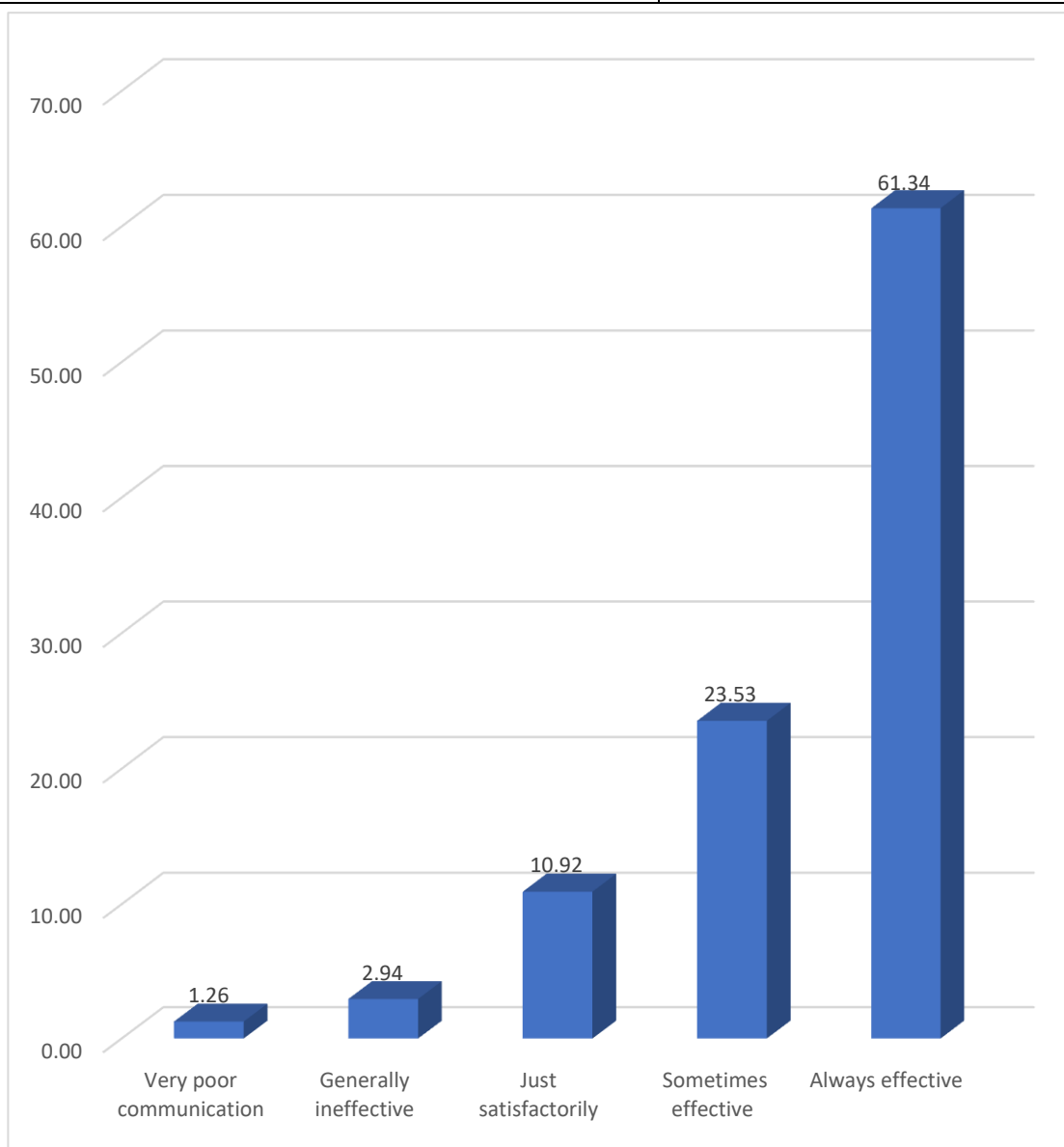
### Details Feedback Analysis

1.How much of your syllabus was covered by your teachers?	%opinion
Below 30%	1.26
30 to 54%	2.10
55 to 69%	7.14
70 to 84%	28.99
85 to 100%	60.50



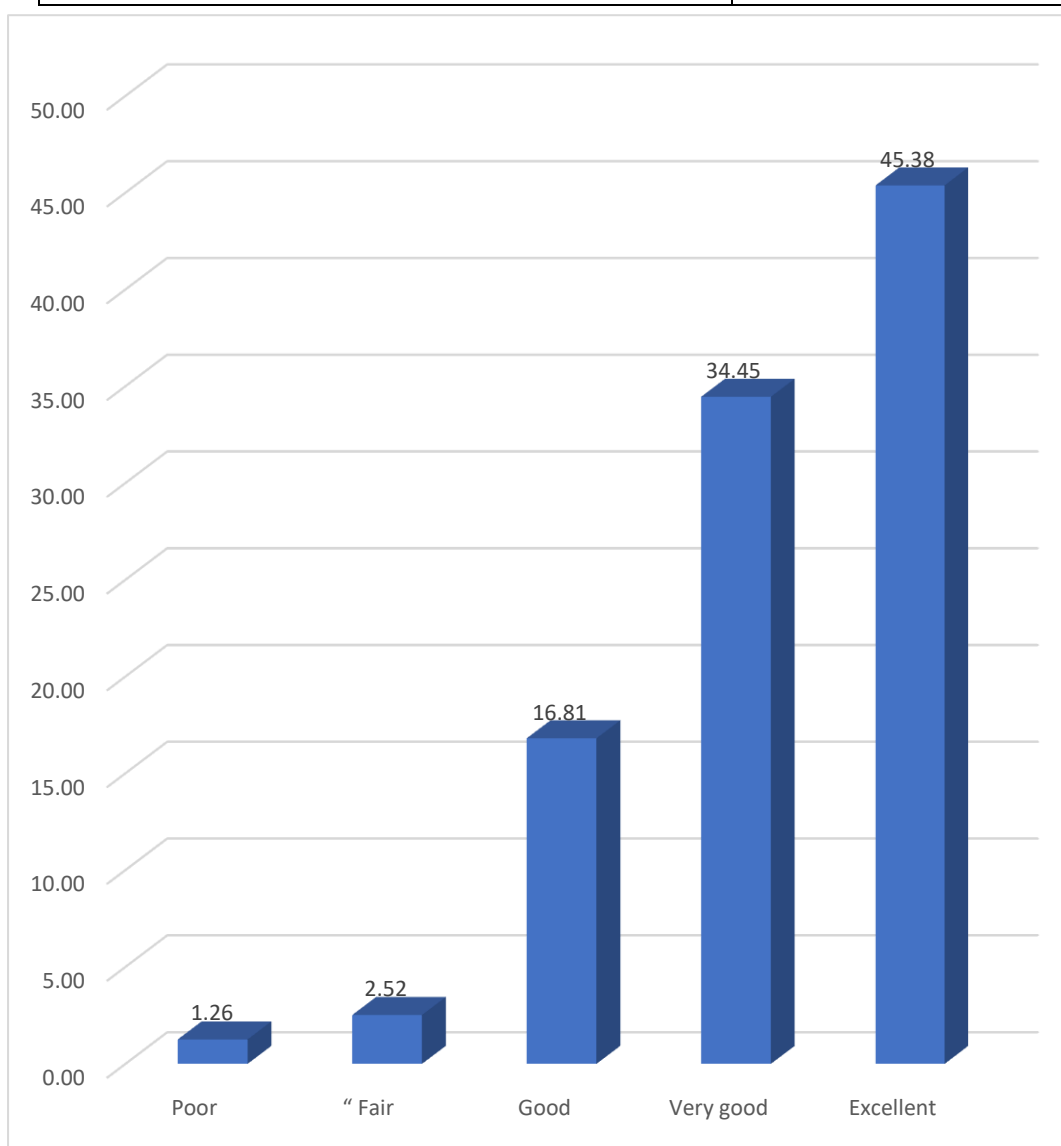
  
 Principal  
 Shivchhatrapati College,  
 Aurangabad

<b>2 How well did the teachers prepare for the classes?</b>	<b>% opinion</b>
Very poor communication	1.26
Generally ineffective	2.94
Just satisfactorily	10.92
Sometimes effective	23.53
Always effective	61.34



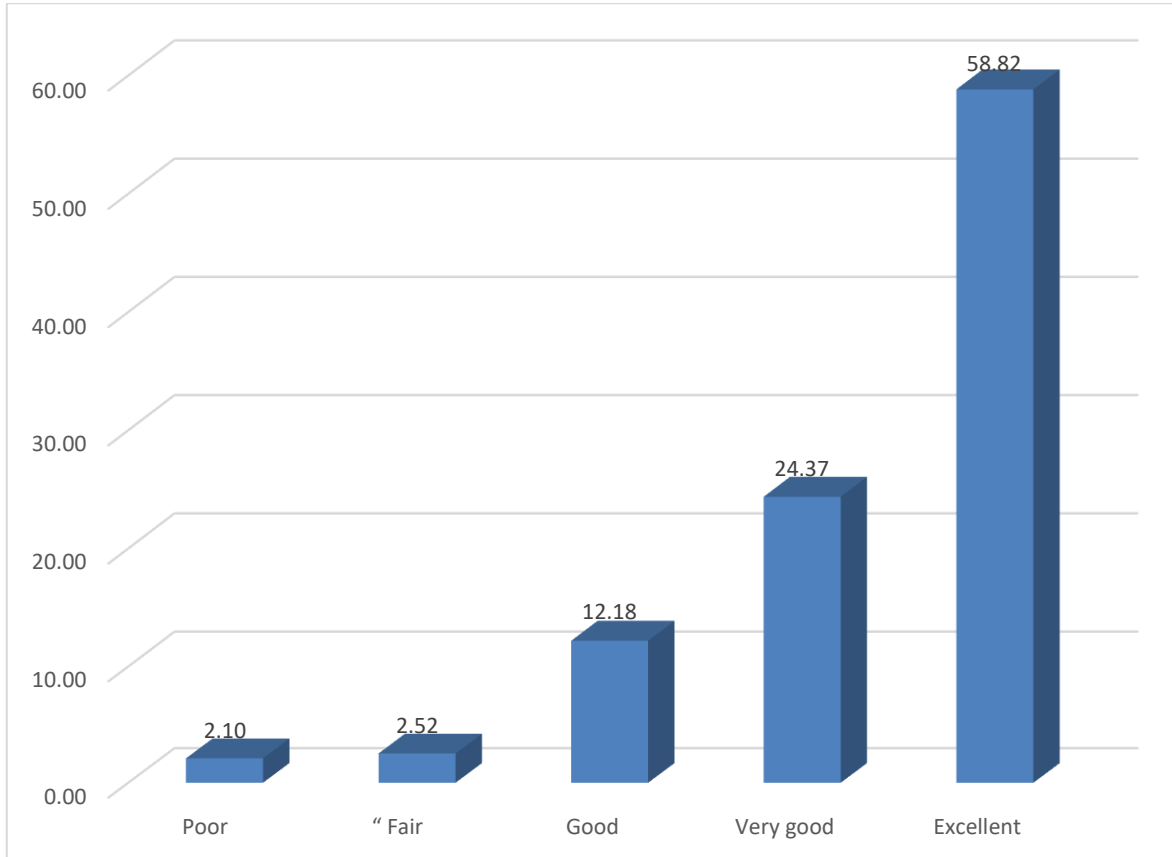
Principal  
Shivchhatrapati College,  
Aurangabad

<b>3.How do you describe the teacher's approach?</b>	<b>% opinion</b>
<b>Poor</b>	<b>1.26</b>
<b>“ Fair</b>	<b>2.52</b>
<b>Good</b>	<b>16.81</b>
<b>Very good</b>	<b>34.45</b>
<b>Excellent</b>	<b>45.38</b>



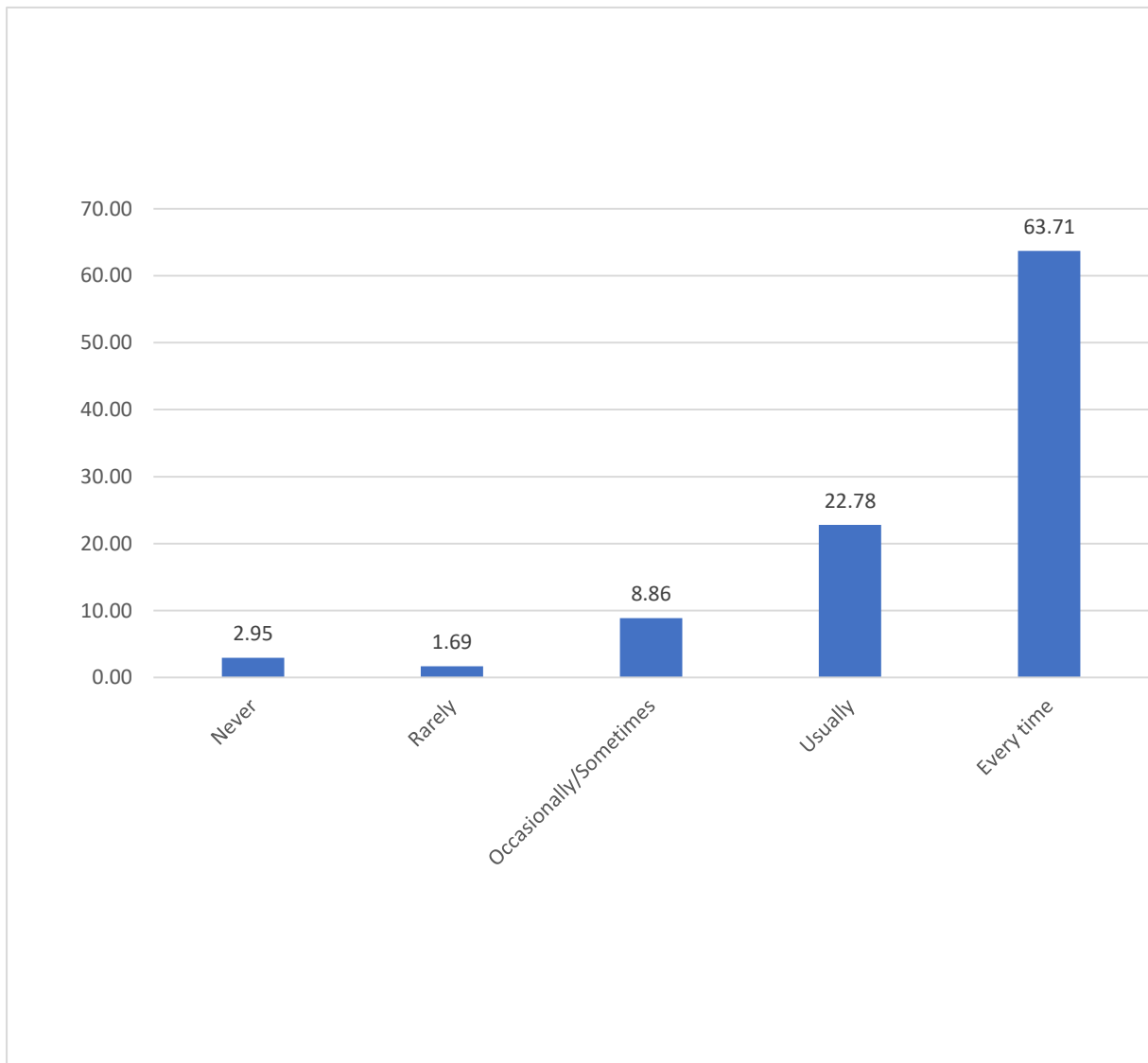
*Principal*  
Principal  
Shivchhatrapati College,  
Aurangabad

<b>4.Fairness of the internal evaluation process by the teachers.</b>	<b>% Oninion</b>
Poor	2.10
“ Fair	2.52
Good	12.18
Very good	24.37
Excellent	58.82



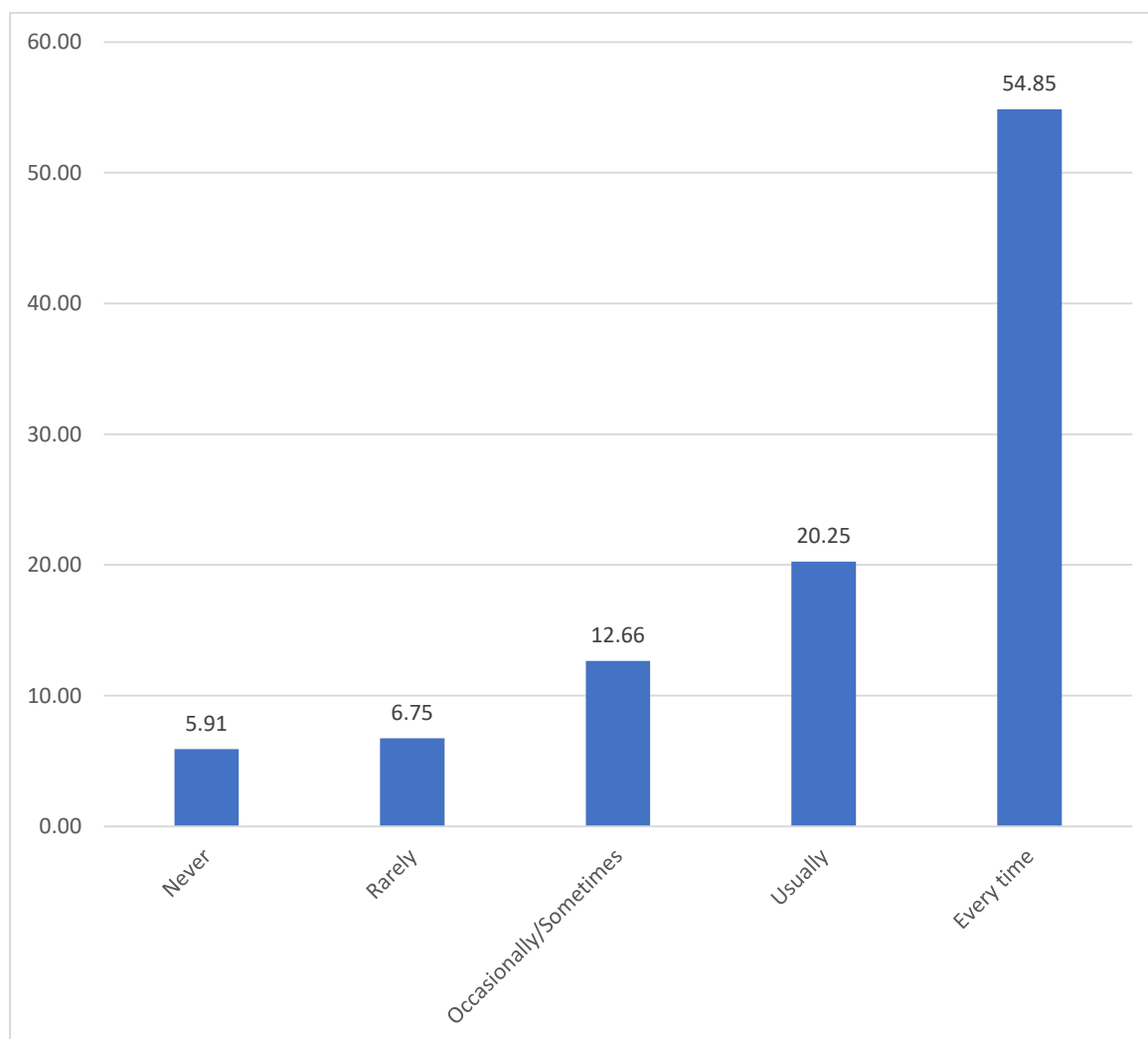
Principal  
Shivchhatrapati College,  
Aurangabad

<b>5. Was your performance in assignments discussed with you?</b>	<b>%opinion</b>
Never	2.95
Rarely	1.69
Occasionally/Sometimes	8.86
Usually	22.78
Every time	63.71



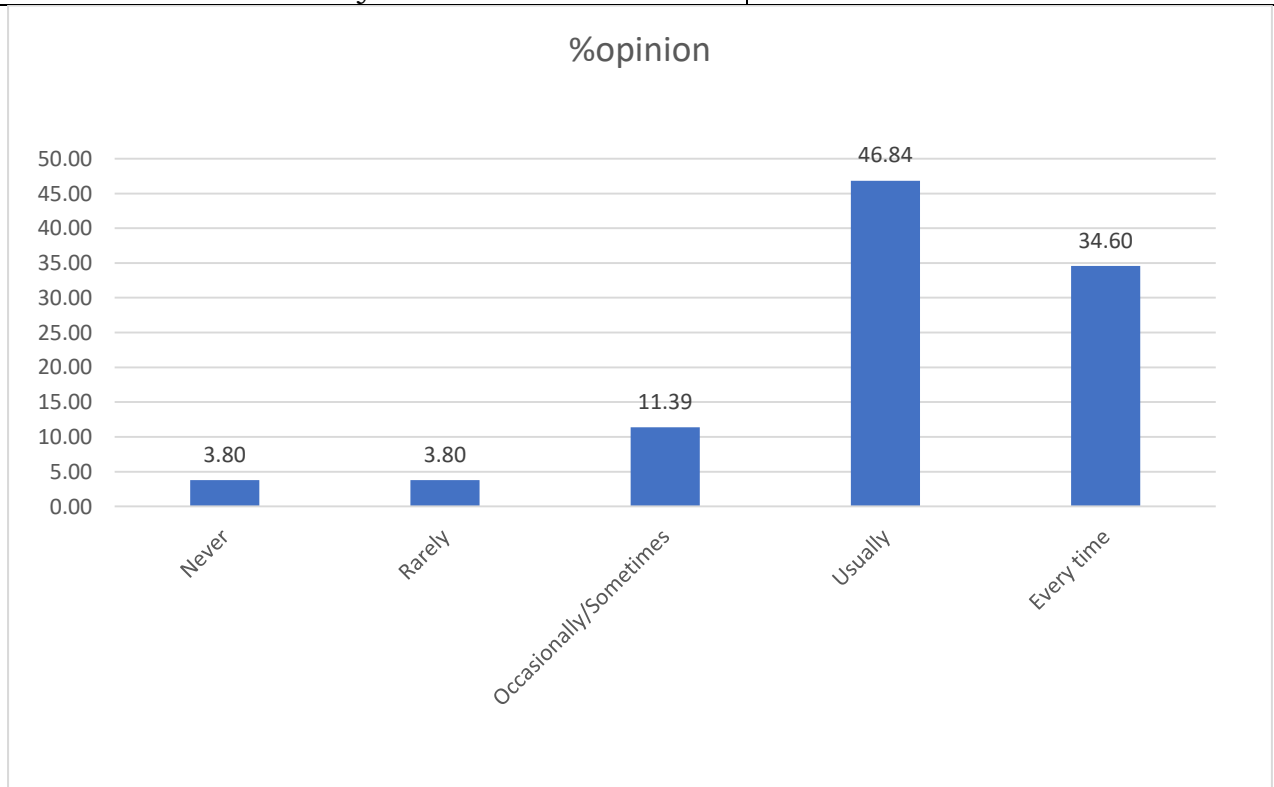
Principal  
Shivchhatrapati College,  
Aurangabad

<b>6. The institute takes active interest in promoting internship, student exchange, field visit opportunities for students.</b>	<b>%opinion</b>
Never	5.91
Rarely	6.75
Occasionally/Sometimes	12.66
Usually	20.25
Every time	54.85



Principal  
Shivchhatrapati College,  
Aurangabad

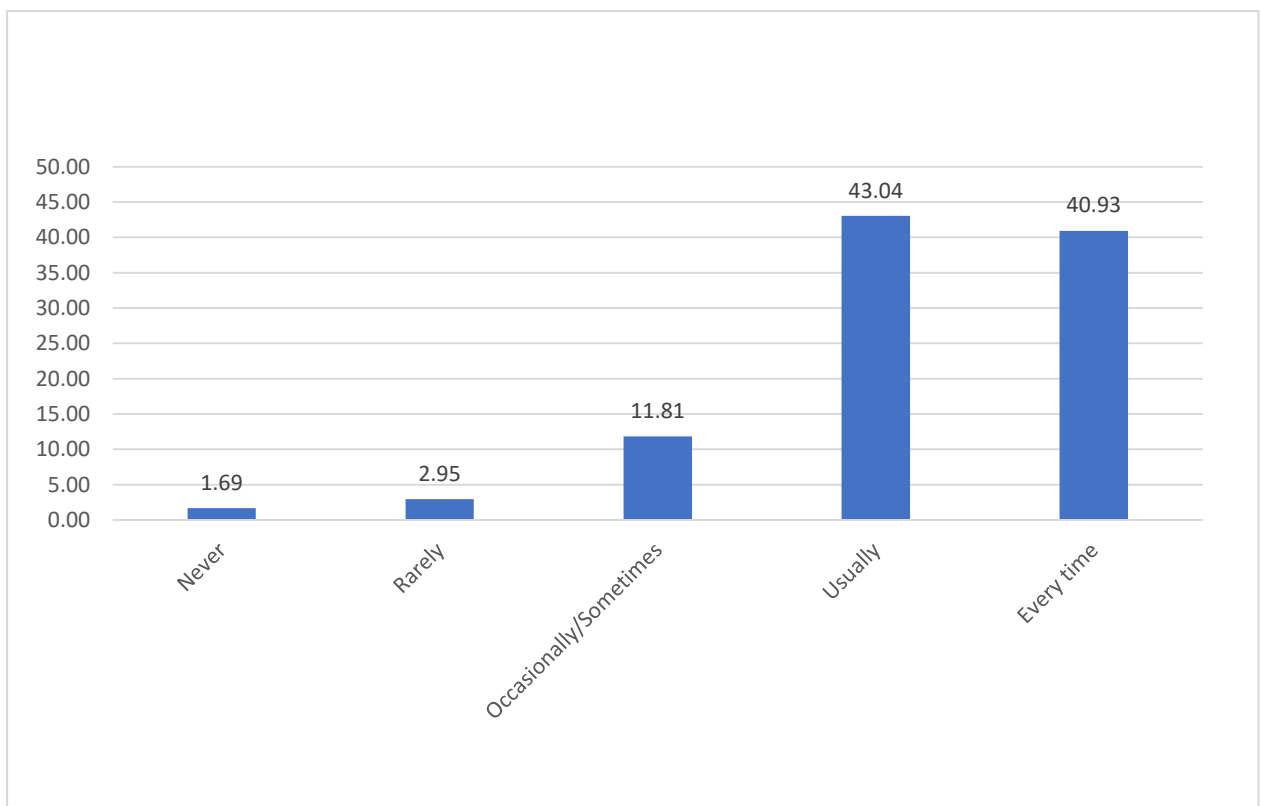
<b>7 The teaching and mentoring process in your institution facilitates you in cognitive, social and emotional growth.</b>	<b>%opinion</b>
Never	3.80
Rarely	3.80
Occasionally/Sometimes	11.39
Usually	46.84
Every time	34.60



  
 Principal  
 Shivchhatrapati College,  
 Aurangabad

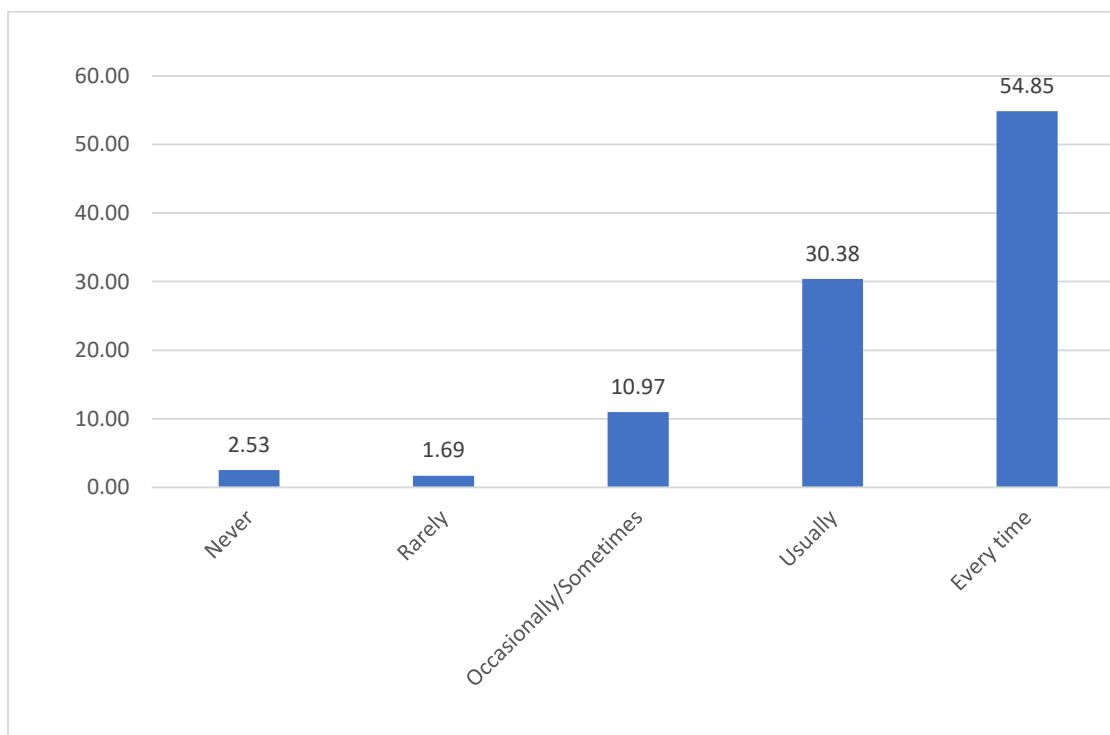


<b>8 The institution provides multiple opportunities to learn and grow</b>	<b>%opinion</b>
Never	1.69
Rarely	2.95
Occasionally/Sometimes	11.81
Usually	43.04
Every time	40.93



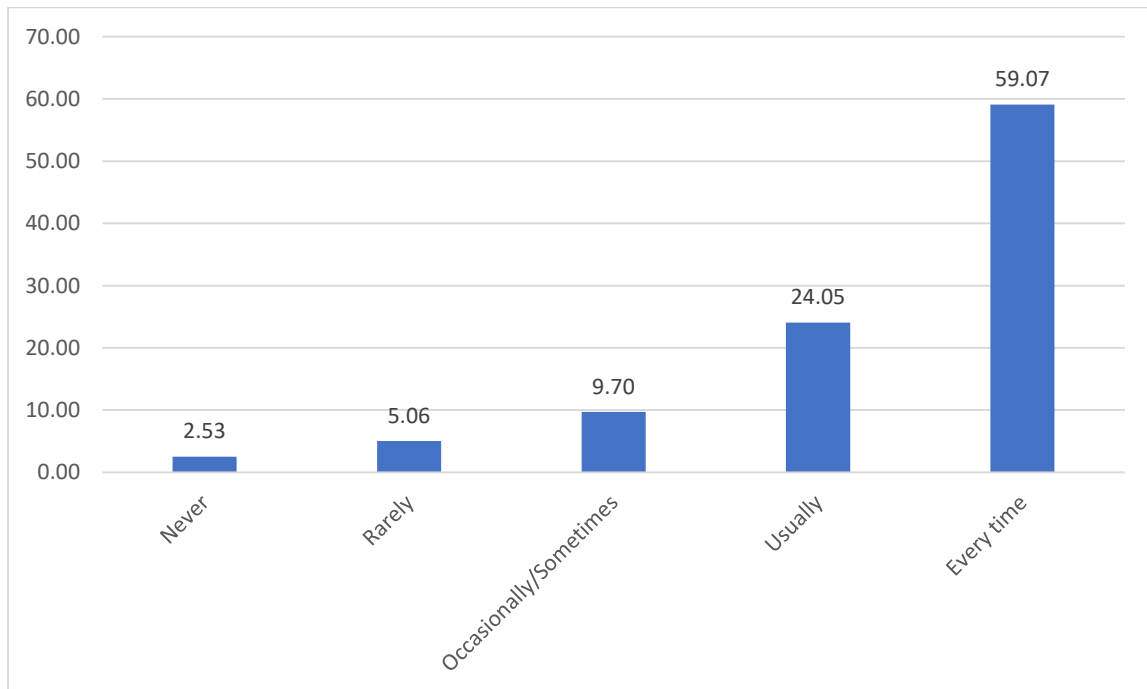
Principal  
Shivchhatrapati College,  
Aurangabad

<b>9 Teachers inform you about your expected competencies, course outcomes and programme outcomes.</b>	<b>% Opinion</b>
Never	2.53
Rarely	1.69
Occasionally/Sometimes	10.97
Usually	30.38
Every time	54.85



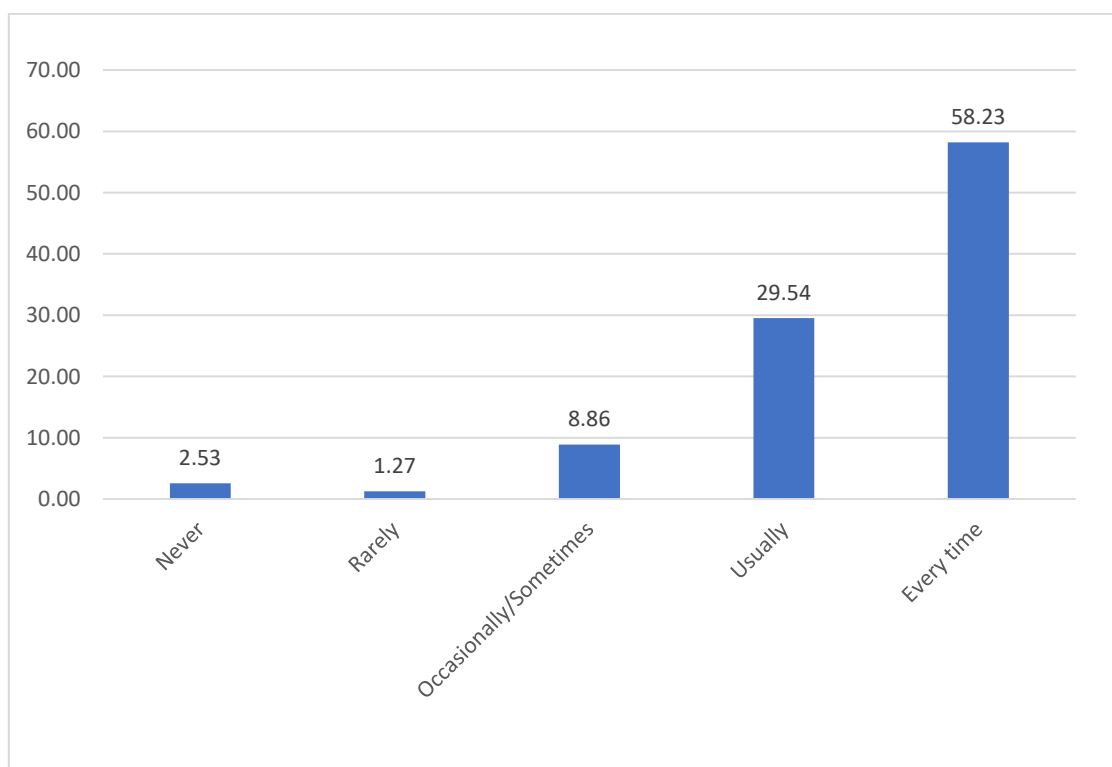
Principal  
Shivchhatrapati College,  
Aurangabad

<b>10. Your mentor does a necessary follow-up with an assigned task to you</b>	<b>% Opinion</b>
Never	2.53
Rarely	5.06
Occasionally/Sometimes	9.70
Usually	24.05
Every time	59.07



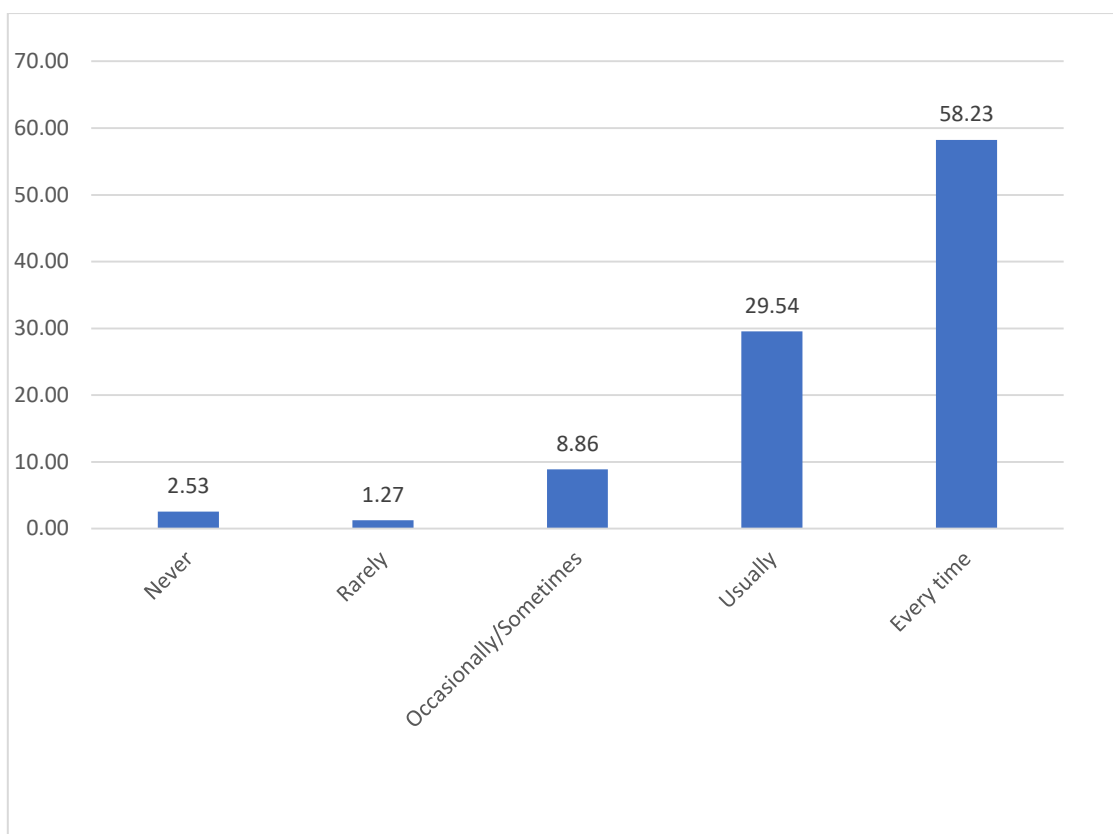
Principal  
Shivchhatrapati College,  
Aurangabad

<b>11.The teachers illustrate the concepts through examples and applications.</b>	<b>% Opinion</b>
Never	2.53
Rarely	1.27
Occasionally/Sometimes	8.86
Usually	29.54
Every time	58.23



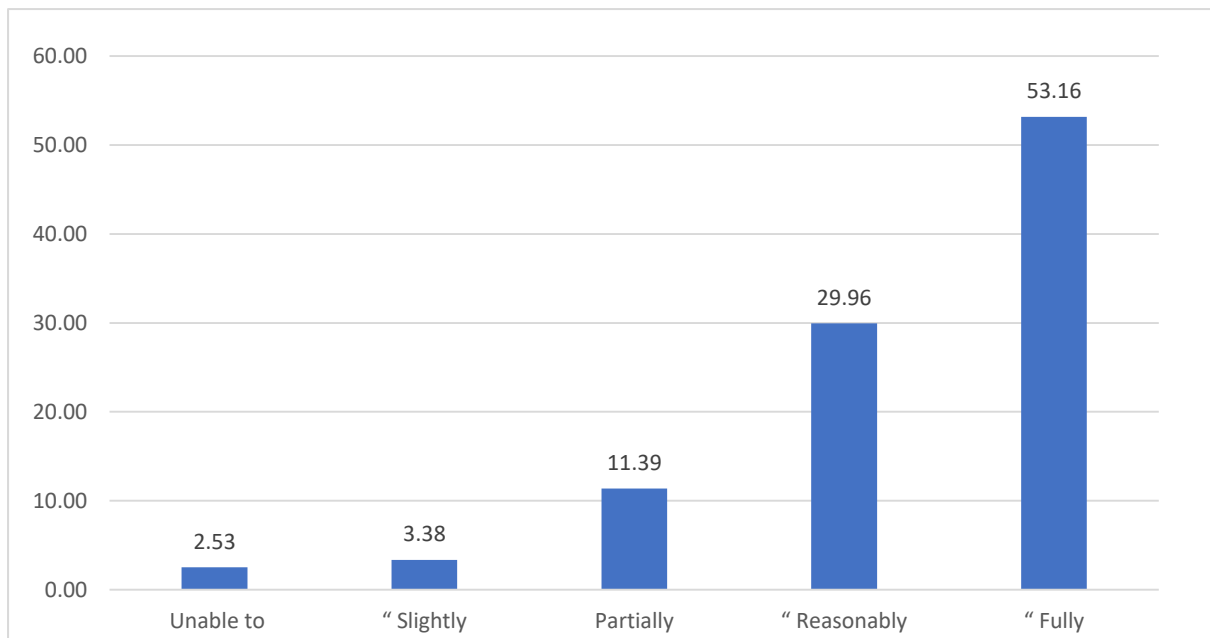
Principal  
Shivchhatrapati College,  
Aurangabad

<b>12.The teachers illustrate the concepts through examples and applications.</b>	<b>%opinion</b>
Never	2.53
Rarely	1.27
Occasionally/Sometimes	8.86
Usually	29.54
Every time	58.23



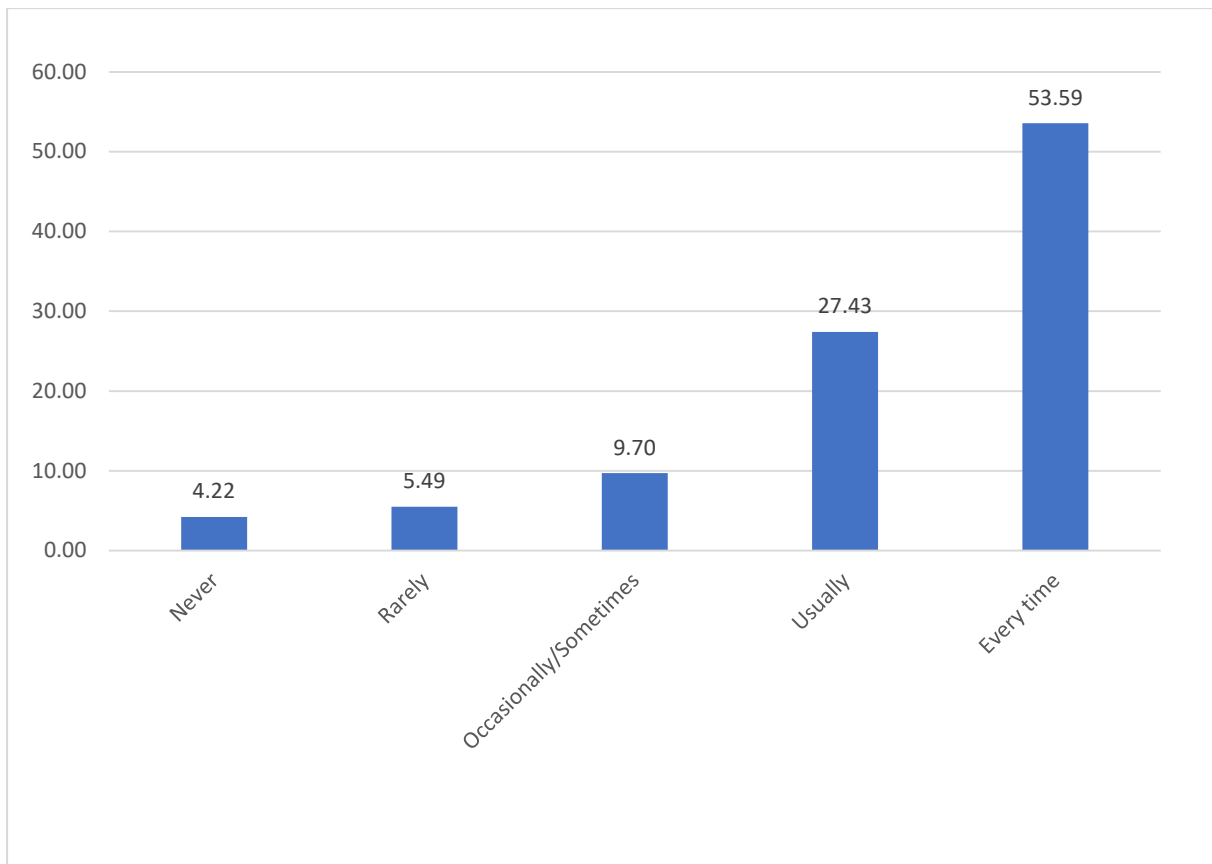
Principal  
Shivchhatrapati College,  
Aurangabad

<b>13. The teachers identify your strengths and encourage you with providing right level of challenges.</b>	<b>% opinion</b>
Unable to	2.53
Slightly	3.38
Partially	11.39
Reasonably	29.96
Fully	53.16



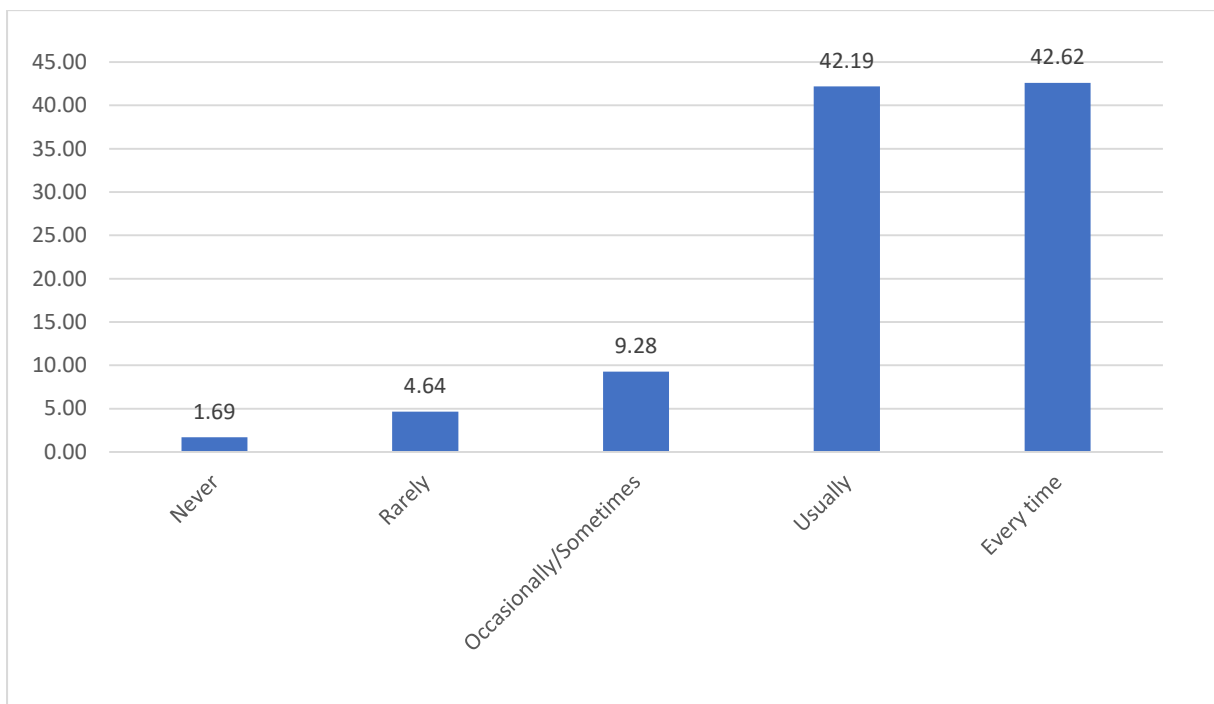
Principal  
Shivchhatrapati College,  
Aurangabad

<b>14. Teachers are able to identify your weaknesses and help you to overcome them.</b>	<b>%opinion</b>
Never	4.22
Rarely	5.49
Occasionally/Sometimes	9.70
Usually,	27.43
Every time	53.59



Principal  
Shivchhatrapati College,  
Aurangabad

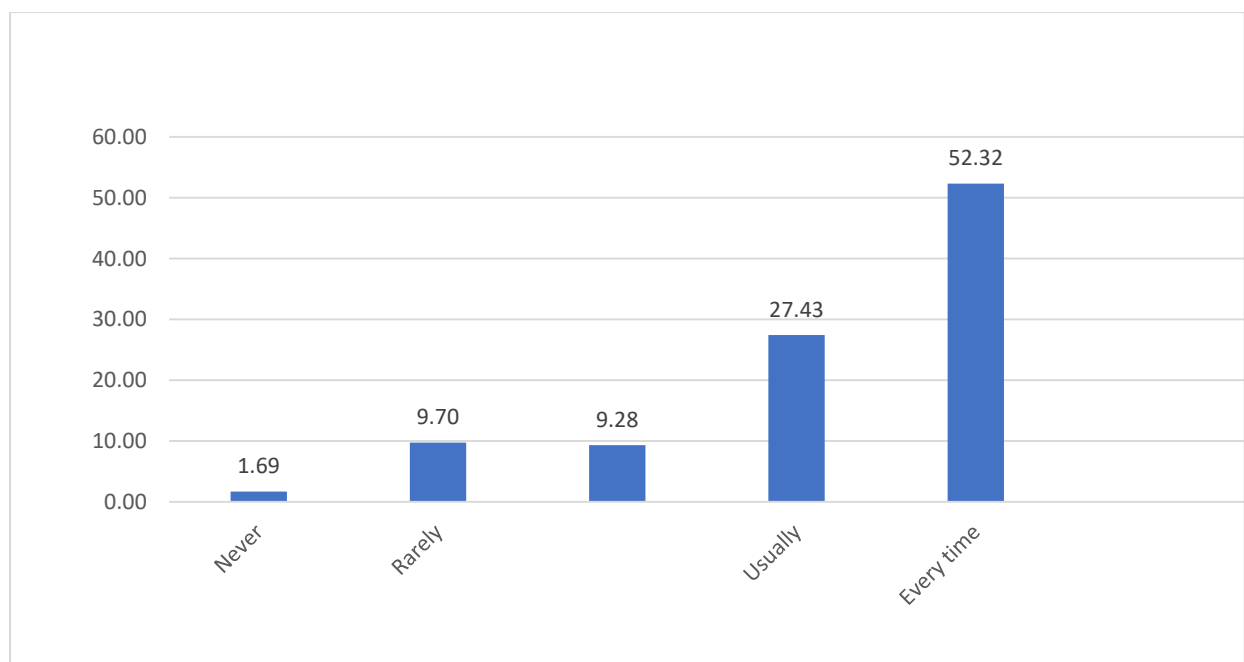
<b>15. The institution makes effort to engage students in the monitoring, review and continuous quality improvement of the teaching learning process.</b>	<b>%opinion</b>
Never	1.69
Rarely	4.64
Occasionally/Sometimes	9.28
Usually	42.19
Every time	42.62



Principal  
Shivchhatrapati College,  
Aurangabad

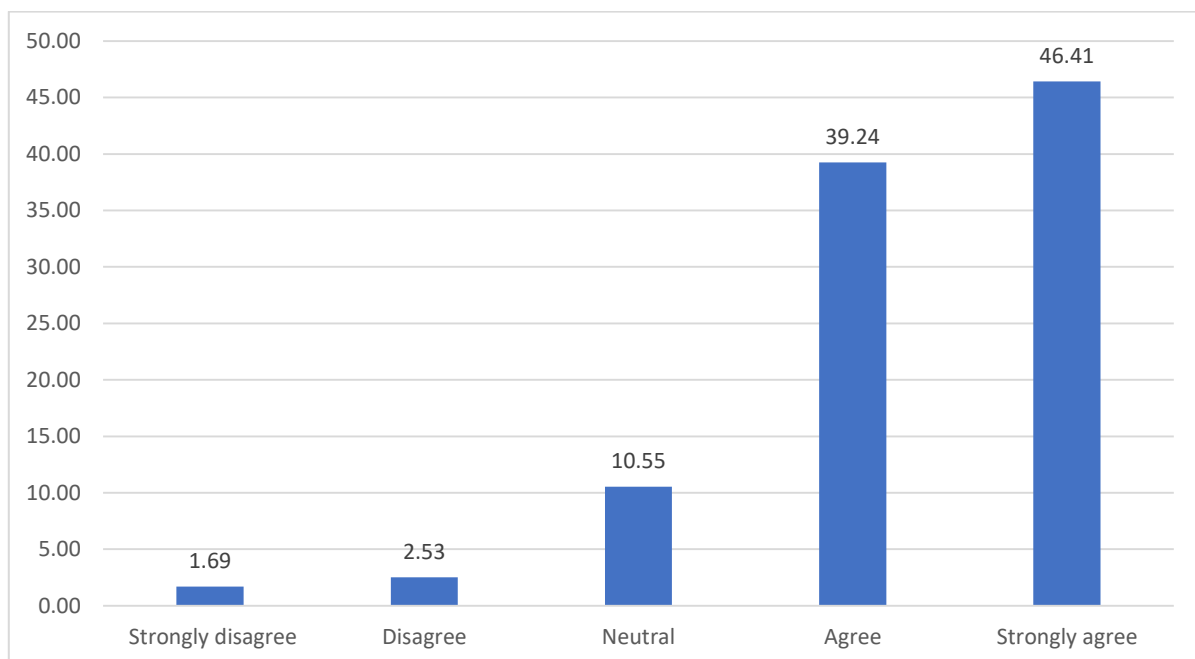


<b>16. The institution makes effort to engage students in the monitoring, review and continuous quality improvement of the teaching learning process.</b>	<b>%opinion</b>
Never	1.69
Rarely	9.70
Occasionally/Sometimes	9.28
Usually	27.43
Every time	52.32



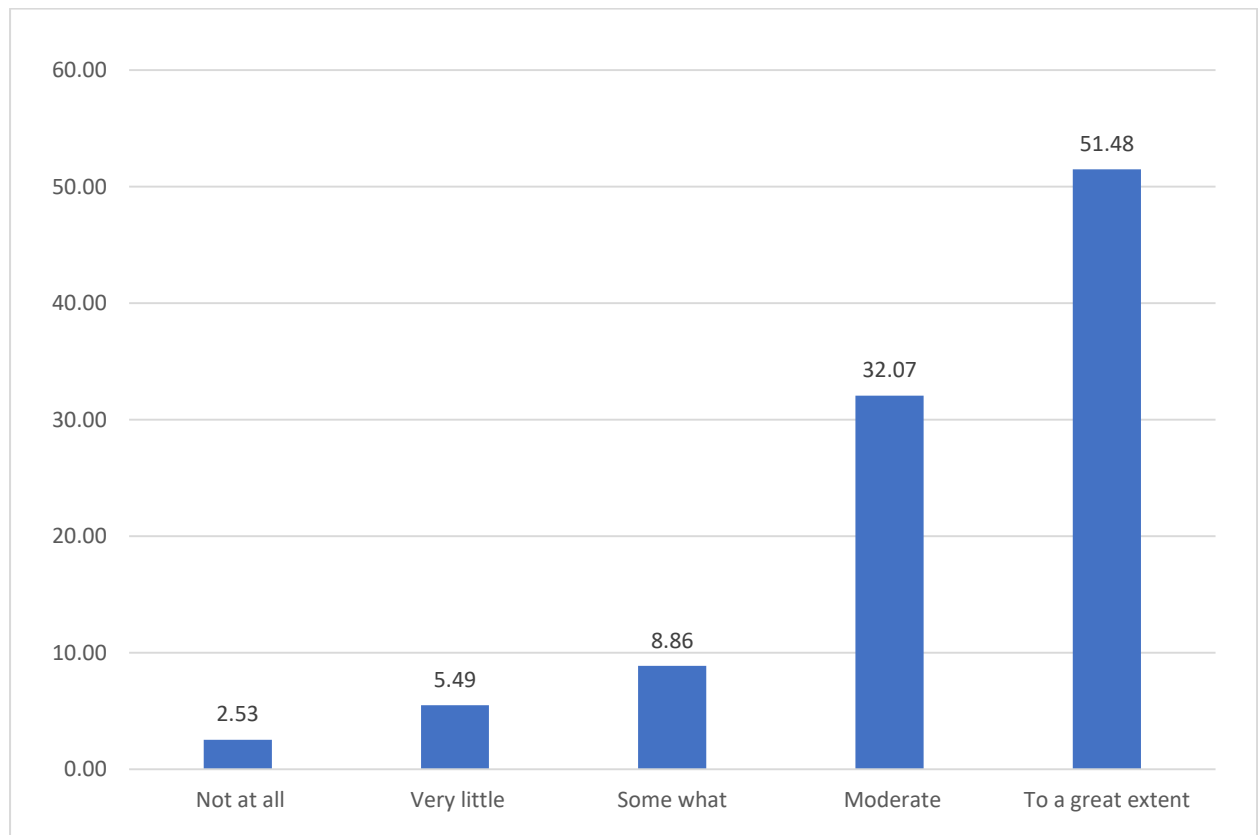
Principal  
Shivchhatrapati College,  
Aurangabad

<b>17 The institution makes effort to engage students in the monitoring, review and continuous quality improvement of the teaching learning process.</b>	<b>%opinion</b>
Strongly disagree	1.69
Disagree	2.53
Neutral	10.55
Agree	39.24
Strongly agree	46.41



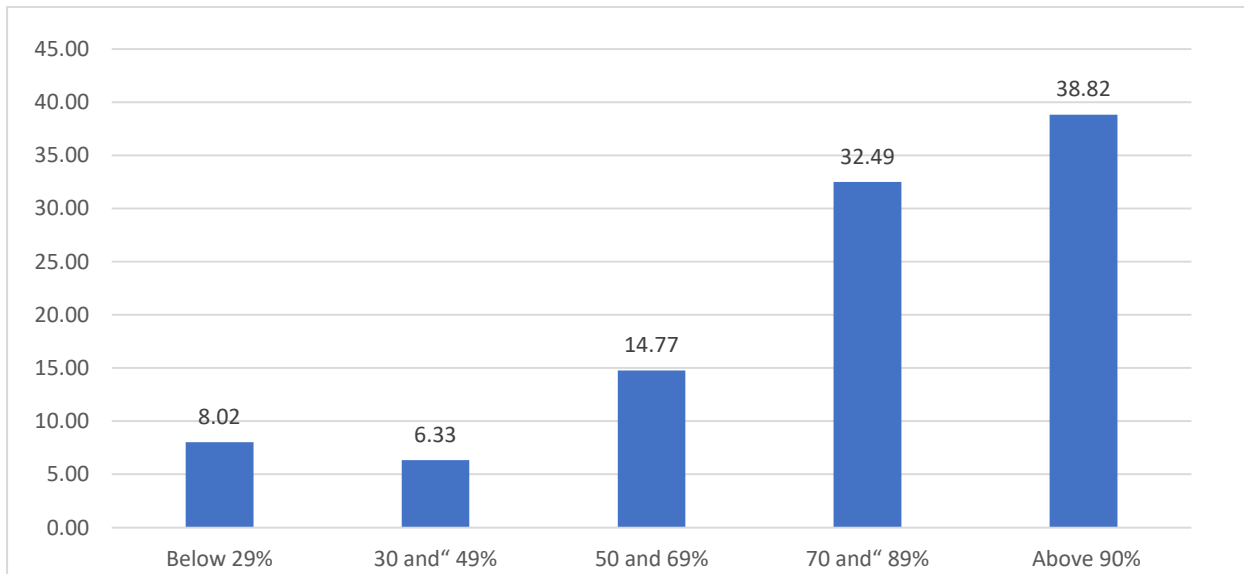
Principal  
Shivchhatrapati College,  
Aurangabad

<b>18. Efforts are made by the institute/ teachers to inculcate soft skills, life skills and employability skills to make you ready for the world of work</b>	<b>%opinion</b>
Not at all	2.53
Very little	5.49
Some what	8.86
Moderate	32.07
To a great extent	51.48



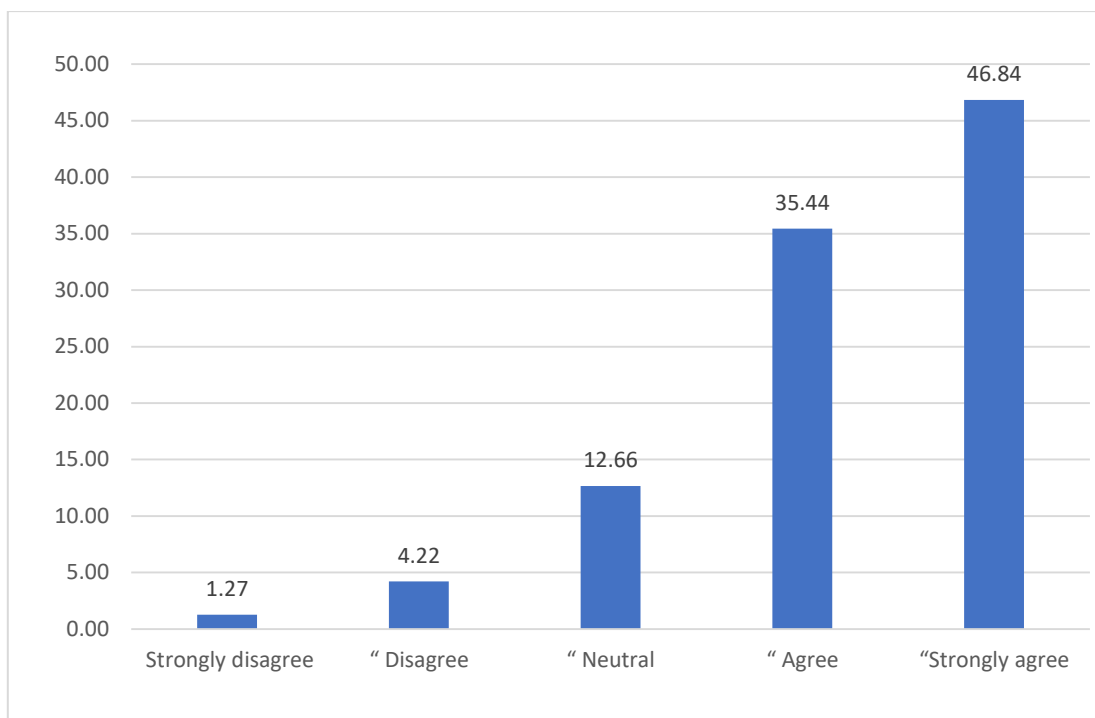
Principal  
Shivchhatrapati College,  
Aurangabad

<b>19. What percentage of teachers use ICT tools such as LCD projector, Multimedia, etc. while teaching</b>	<b>%opinion</b>
Below 29%	8.02
30 and“ 49%	6.33
50 and 69%	14.77
70 and“ 89%	32.49
Above 90%	38.82



Principal  
Shivchhatrapati College,  
Aurangabad

<b>20. The overall quality of teaching-learning process in your institute is very good.</b>	<b>%opinion</b>
Strongly disagree	1.27
“ Disagree	4.22
“ Neutral	12.66
“ Agree	35.44
“Strongly agree	46.84



**Principal**



*[Signature]*  
Principal  
Shivchhatrapati College,  
Aurangabad